



TUBI E ACCESSORI PER GAS



TUBI E ACCESSORI PER GAS





TUBO GAS A NORMA EN14800

Gas hose as EN14800




Tubo flessibile in acciaio inossidabile a parete continua adatto per l'allacciamento di apparecchi a gas per uso domestico TIPO1 alimentati a gas manifatturati, naturali e GPL. Installazione in ambiente interno ed esterno.

Stainless steel flexible hose composed of a continuous wall. Fit for the connection of the domestic appliances and similar Powered by manufactured gas, natural gas and LPG. Installation in internal and external environment.

DATI TECNICI Technical Sheet

Tubo - Hose	Acciaio inossidabile AISI 316 - Stainless steel AISI 316
Raccordi - Fitting	Acciaio inossidabile AISI 303 - Stainless steel AISI 303
Treccia - Braid	Acciaio inossidabile AISI 304 Ø filo 0,25mm (96 fili) Stainless steel AISI 304, Ø wire 0,25mm (96 wires)
Guaina di protezione - Outside coated	PVC colore giallo - Yellow PVC
Guarnizioni - Gaskets	Gomma nitrilica secondo normativa EN549 Nitrilic rubber as EN 549
Raggio di curvatura - Bending radius	55 mm
Pressione di esercizio - Working pressure	0,5bar
Temperatura ambiente - Operating temperature	-5 +60 °C

CODICE	DESCRIZIONE	DN TUBO	cm	 Pz
				GAS.FF50
GAS.FF75	F1/2" x F1/2"	15	75	12
GAS.FF100	F1/2" x F1/2"	15	100	12
GAS.FF125	F1/2" x F1/2"	15	125	12
GAS.FF150	F1/2" x F1/2"	15	150	12
GAS.FF200	F1/2" x F1/2"	15	200	12
GAS.MF50	M1/2" x F1/2"	15	50	12
GAS.MF75	M1/2" x F1/2"	15	75	12
GAS.MF100	M1/2" x F1/2"	15	100	12
GAS.MF125	M1/2" x F1/2"	15	125	12
GAS.MF150	M1/2" x F1/2"	15	150	12
GAS.MF200	M1/2" x F1/2"	15	200	12



GAS ANFLEX




Tubo gas flessibile estensibile in acciaio adatto per il collegamento tra la rete gas e le caldaie murali.

Gas extendable hose fit for the connection between the gas plant and boilers wall.

DATI TECNICI Technical Sheet

Tubo - Hose	Acciaio inossidabile AISI 316L - Stainless steel AISI 316L
Raccordi - Fitting	Acciaio inossidabile AISI 303 elettrosaldati Stainless steel AISI 303 electro welded
Rivestimento - Coating	Guaina termorestringente - Shrink sheath
Raggio di curvatura - Bending radius	DN15 25mm - DN20 27mm - DN25 30mm
Pressione di esercizio - Working pressure	0,5bar
Temperatura d'esercizio - Operating temperature	-5 +70 °C

CODICE	DESCRIZIONE	DN TUBO	cm	 Pz
GAS UNIS70.7	M1/2" x F1/2"	15	65/125	25
GAS UNIS70.8	M1/2" x F1/2"	15	100/200	25
GAS UNIS70.9	M1/2" x F1/2"	15	200/400	25
GAS UNIS70.10	M1/2" x F3/4"	15	65/125	25
GAS UNIS70.11	M1/2" x F3/4"	15	100/200	25
GAS UNIS70.12	M1/2" x F3/4"	15	200/400	25
GAS UNIS70.13	M3/4" x F3/4"	20	65/125	25
GAS UNIS70.14	M3/4" x F3/4"	20	100/200	25
GAS UNIS70.15	M3/4" x F3/4"	20	200/400	25
GAS UNIS70.16	M1" x 1"	25	65/125	16
GAS UNIS70.17	M1" x 1"	25	100/200	16
GAS UNIS70.18	M1" x 1"	25	200/400	16



Gas contatore

F1" GIREVOLE x F3/4"

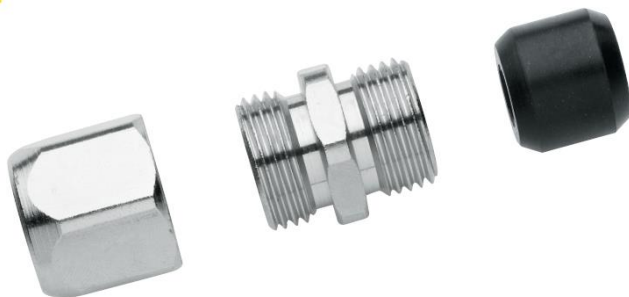


Gas cont 1" ¼

F1"1/4 GIREVOLE x F3/4"



Gas adattatore





TUGAS12

ROTOLO 4mt PER GAS – RACCORDI ½"
Roll of 4 m for gas, ½" fittings

TUGAS15

ROTOLO 4mt PER GAS – RACCORDI ¾"
Roll of 4 m for gas, ¾" fittings

TUGAS20

ROTOLO 4mt PER GAS – RACCORDI 1"
Roll of 4 m for gas, 1" fittings

ACCESSORI SEPARATI:

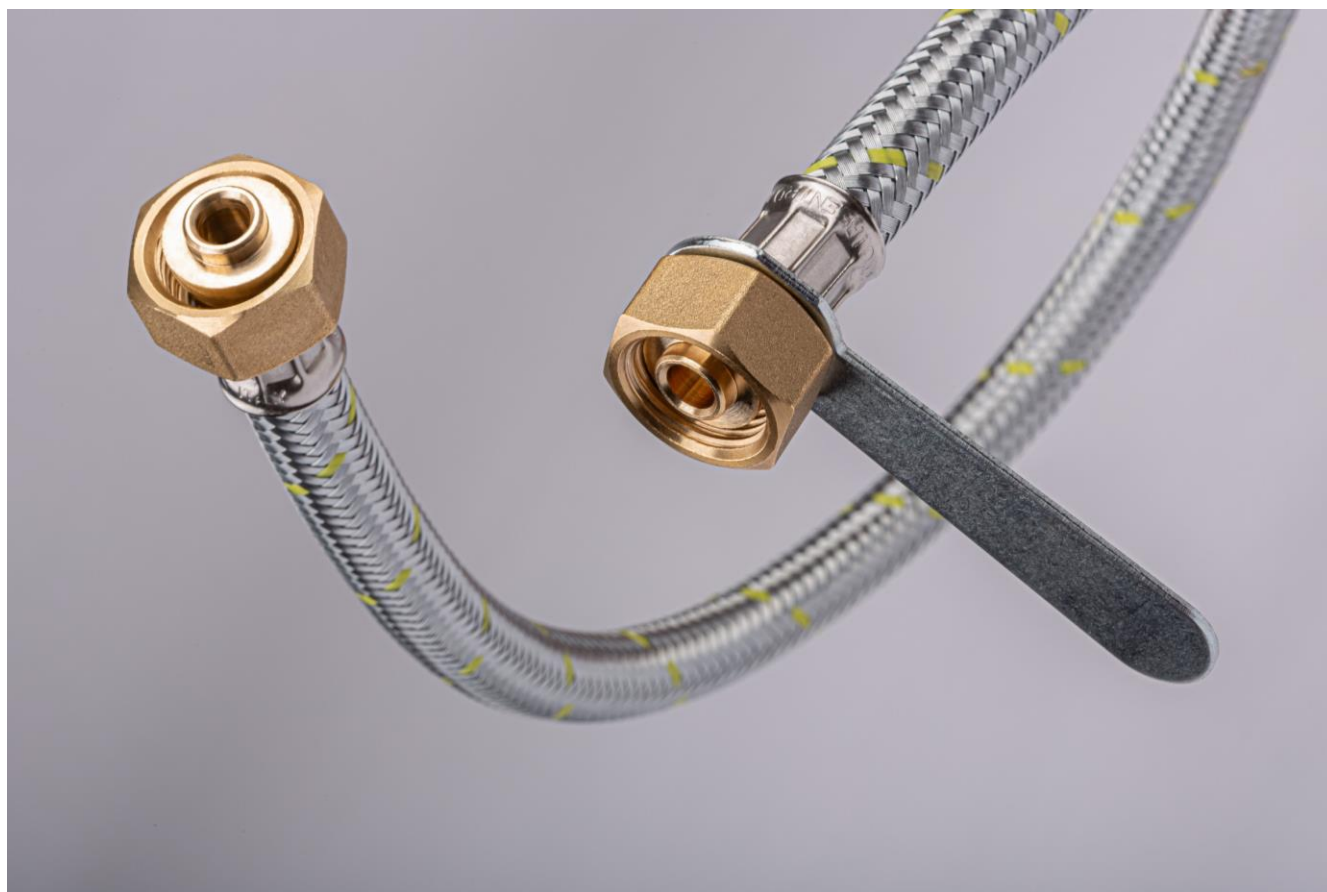
Separated accesories

Art.

GAS DADO1/2	Dado ½" con guarnizione -Nuts ½" with gaskets
GAS DADO3/4	Dado ¾" con guarnizione -Nuts ¾" with gaskets
GAS DADO1	Dado 1" con guarnizione -Nuts ¾" with gaskets
GAS NIPLES1/2	Niples ½" con guarnizione - Niples ½" with gaskets
GAS NIPLES3/4	Niples ¾" con guarnizione - Niples ¾" with gaskets
GAS NIPLES1	Niples 1" con guarnizione - Niples ¾" with gaskets



MANICHETTE GAS



Manichetta gas con leva



MANICHETTE GAS





	Codice	Lungh. [mm]	Unità di vendita
--	--------	----------------	---------------------



F 1/2 x F1/2 CON LEVA

MG08-001-030	300	1
MG08-001-035	350	1
MG08-001-040	400	1
MG08-001-045	450	1
MG08-001-050	500	1
MG08-001-055	550	1
MG08-001-060	600	1
MG08-001-065	650	1
MG08-001-070	700	1
MG08-001-075	750	1
MG08-001-080	800	1
MG08-001-090	900	1
MG08-001-100	1000	1